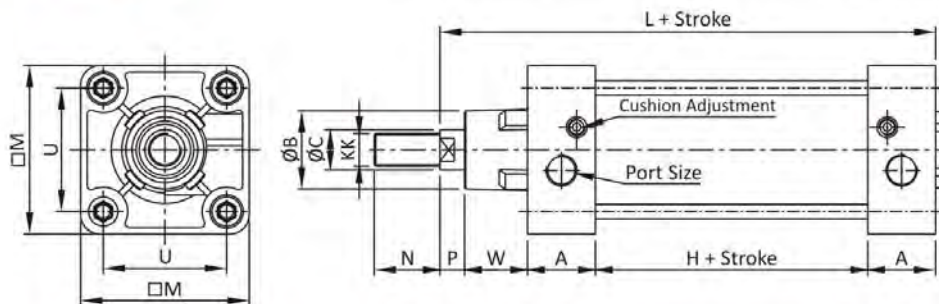
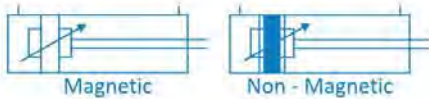


Features

- ▶▶ Adjustable cushioning at both ends
- ▶▶ Wide varieties of mounting
- ▶▶ Low Friction
- ▶▶ Long Life

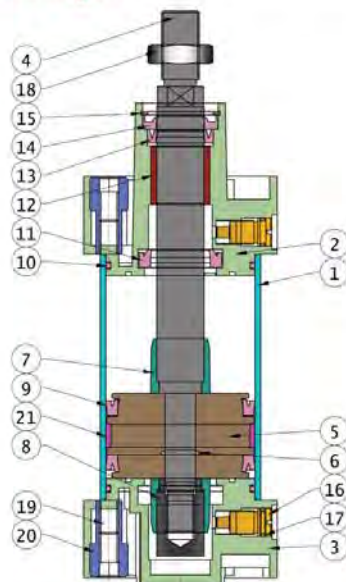
Technical Specification

Bore Dia	32	40	50	63	80	100	125
Stroke	Standard in Multiplication of 25 mm						
Cushion	Available at both ends						
Barrel	Aluminium, Hard Anodized						
Piston Rod	EN 8 with hard chrome plated						
Piston Rod Dia	12	16	20	20	25	25	32
End Cover	Aluminium Pressure Die Cast						
Sales	Polyurethane, Nitrile <i>(Viton seal available on request for high temperature)</i>						
Surface Treatment	Auto finish enameling end cover & cylinder barrel						
Mounting	Std. Mounting available (for more details see dimension)						



Bore dia	KK	H	A	W	P	N	U	M	ØB	ØC	L	D	K*	Port Size
32	M10 X 1.25P.	44	25	20	6	22	32	44	30	12	120	M6	40	G1/8"
40	M12 X 1.25P.	50	28	24	6.5	24	40	55	35	16	136.5	M6	63	G1/4"
50	M16 X 1.5P.	47	30	30	8	32	48	63	40	20	145	M6	98	G1/4"
63	M16 X 1.5P.	55	33	31	8	32	60	82	45	20	160	M8	165	G3/8"
80	M20 X 1.5P.	56	36	34	12	40	72	94	45	25	174	M10	220	G3/8"
100	M20 X 1.5P.	58	40	35	16	40	89	111	55	25	189	M10	360	G1/2"
125	M20 X 2P.	70	45	46	19	50	110	134	60	32	225	M12	613	G1/2"

K* = Push Force at 5 Kg/cm²



No.	Item Name	Material
1	Pipe	Aluminum Alloy
2	Top Cover	Aluminum Pressure Die Cast
3	Bottom Cover	Aluminum Pressure Die Cast
4	Piston Rod (Shaft)	EN - 8
5	Piston Machining	Aluminum
6	Piston 'O' Ring	NBR
7	Collar	Delrin
8	Piston Lock Nut	M. S.
9	Piston 'V' Seal	NBR
10	Diameter 'O' Ring	NBR
11	Cushion Seal	P. U.
12	Bearing Bush	Brass
13	Shaft 'V' Seal	NBR
14	Metal Bonded Shaft 'V' Seal	NBR
15	Circlip	Stud
16	Cushion Pin	S. S.
17	Cushion 'O' Ring	NBR
18	Shaft Lock Nut	M. S. / S. S.
19	Stud	M. S. (Silver Zinc Plated)
20	L. N. Bolt	M. S. (Silver Zinc Plated)
21	Delrin Ring	MOS2 (Blank)

Model : AX 102
Series : A50

Rod End Spherical Eye Mounting



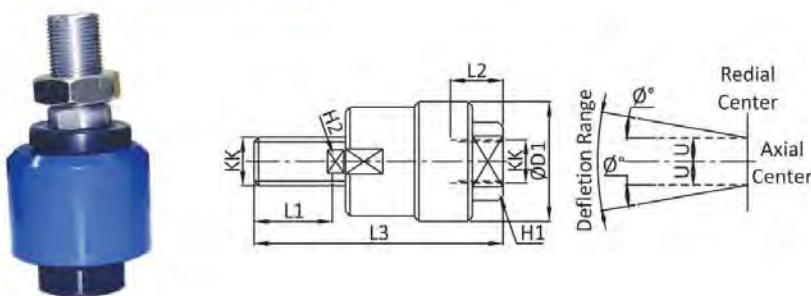
Bore die	KK	CN H9	T	EN h12	CE	LE min	ER max	AX	SW	Z
32	M10 X 1.25P.	10	10.5	14	43	15	14	20	17	13°
40	M12 X 1.25P.	12	12	16	50	17	16	22	19	
50	M16 X 1.5P.	16	15	21	64	22	21	28	22	15°
63	M16 X 1.5P.	16	15	21	64	22	21	28	5	
80	M20 X 1.5P.	20	18	25	77	26	25	33	30	
100	M20 X 1.5P.	20	18	25	77	26	25	33	30	
125	M27 X 2P.	30	25	37	110	36	35	51	36	

Rod End Fork Mounting



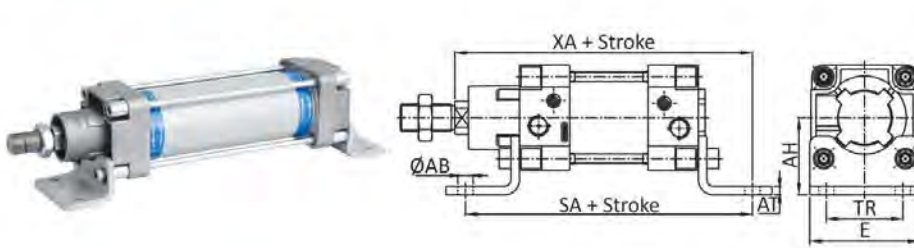
Bore die	KK	CE	CK F8	CM B12	LE	ER	CL
32	M10 X 1.25P.	40	10	10	20	16	20
40	M12 X 1.25P.	48	12	12	24	19	24
50	M16 X 1.5P.	64	16	16	32	25	32
63	M16 X 1.5P.	64	16	16	32	25	32
80	M20 X 1.5P.	80	20	20	40	32	40
100	M20 X 1.5P.	80	20	20	40	32	40
125	M27 X 2P.	110	30	30	54	38	55

Rod End Aligner Mounting



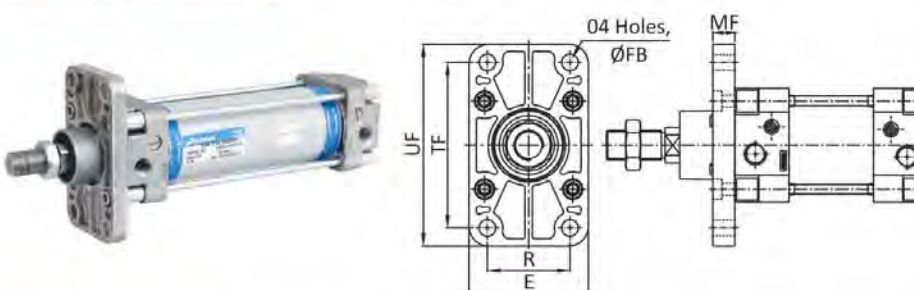
Bore die	KK	L1	L2	L3	H1	H2	D1	U	Ø°
32	M10 X 1.25P.	20	14	65	17	8	28	0.75	5
40	M12 X 1.25P.	22	18	75	19	10	32	1	5
50	M16 X 1.5P.	25	22	91	27	13	41	1	5
63	M16 X 1.5P.	25	22	91	27	13	41	1	5
80	M20 X 1.5P.	30	28	112	32	16	50	1.5	5
100	M20 X 1.5P.	30	28	112	32	16	50	1.5	5
125	M27 X 2P.	ON REQUEST							

Foot Mounting



Bore die	TR ±0.3	AB H13	AH Js15	AT	E	SA	TOL	XA
32	32	7	32	4	46	142		144
40	40	9	36	4	52	161	±1.25	163
50	48	9	45.3	5	64.5	169.5		174.8
63	60	8.7	49.5	6	82	187		191
80	63	12	63	6	95	210	±1.6	215
100	75	14	71	6	115	220		230
125	ON REQUEST							

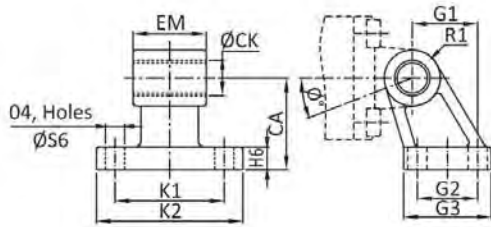
Front Flange Mounting



Bore die	TR ±0.3	AB H13	AH Js15	AT	E	SA	TOL	XA
32	32	7	32	4	46	142		144
40	40	9	36	4	52	161	±1.25	163
50	48	9	45.3	5	64.5	169.5		174.8
63	60	8.7	49.5	6	82	187		191
80	63	12	63	6	95	210	±1.6	215
100	75	14	71	6	115	220		230
125	ON REQUEST							

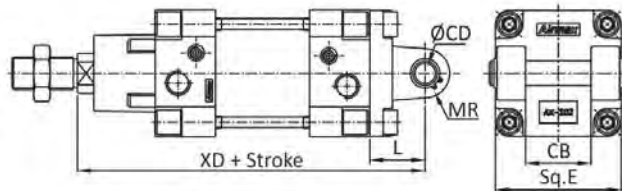
Note : Since, constant worldwide advancement in technology, We keep our rights reserved to make changes time to time in Technical Specification and Dimensions without prior notice.

Clevis Foot Bracket Mounting



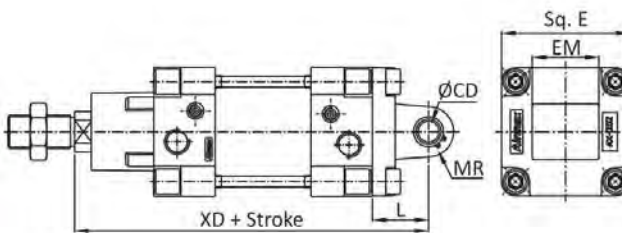
Bore die	K1 js14	G2 js14	S6	CA js16	CK H9	FM	TOL	G1 ±0.2	H6	R1 max	K2	G3	φ*
32	38	18	5.5	32	10	26	-0.2	21	17	10	51	32	17
40	41	22	5.5	36	12	28		24	19	13	54	36	17
50	50	30	6.6	45	12	32	-0.6	33	22	13	65	45	17
63	52	35	6.6	50	16	40		37	5	17	49	53	17
80	66	40	11	63	16	50	47	30	15	86	60	---	
100	76	50	11	71	20	60	55	30	19	96	70	---	
125	94	60	14	90	30	70	70	36	22.5	124	90	---	

Female Clevis Mounting



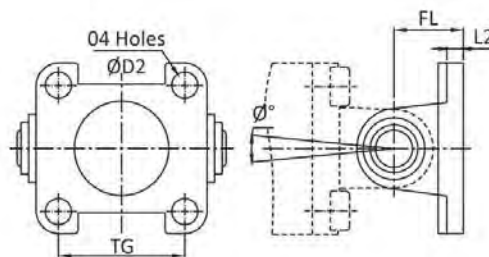
Bore die	ØCD	CB H14	L	MR	Sq. E	XD
32	10	26	22	10	44	142
40	12	28.5	25	12	53.5	160
50	12	32	27	12	61.5	170
63	16	40	32	16	81.5	190
80	16	50	36	16	93	210
100	20	60	41	21	110	230
125	ON REQUEST					

Male Clevis Mounting



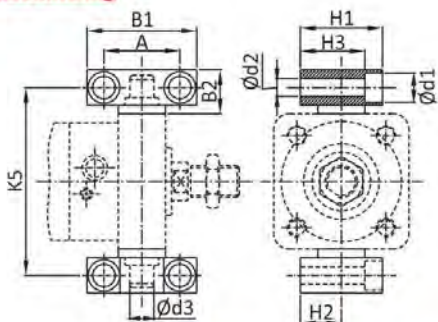
Bore die	ØCD	EM	L	MR	Sq. E	XD
32	10	25.5	22	10	44	142
40	12	28	25	12	53.5	160
50	12	32	27	12	61.5	170
63	16	40	32	16	81.5	190
80	16	49.5	36	16	93	210
100	20	59	41	20.5	110	230
125	ON REQUEST					

Wall Bracket Mounting



Bore die	TG	D2	L2	FL	φ*
32	32	6.6	5.5	22	50
40	40	6.6	5.5	25	50
50	48	6.6	6.5	27	40
63	60	9	10.5	32	50
80	72	11	10	36	60
100	89	11	10	41	60
125	110	14	10	50	60

Trunnion Bracket Mounting



Bore die	B1	B2	A ±0.2	d1	d2 H13	d3 H9	H1	H2 ±0.1	H3	K5 js14
32	46	18	32	11	6.6	12	30	15	23	71
40	55	21	36	15	9	16	36	18	27	87
50	55	21	36	15	9	16	36	18	27	99
63	65	23	42	16.5	11	20	40	20	29	116
80	65	23	42	16.5	11	20	40	20	29	136
100	75	28.5	50	20	14	25	50	25	37	164
125	75	28.5	50	20	14	25	50	25	37	192